

Arm type

Cable carrier

FXyX

3axes/ZT

Ordering method

FXyX - C - A1 - 105 - 55 - ZT4 - 06 - 30 - 3L - TRCX - 3 - E - B1

Model - Cable - Combination - X-axis stroke - Y-axis stroke - ZR-axis - Lead - Z-axis stroke - Cable length - Controller - Number of axes - Usable for CE - Battery

A1 to A4 | 15 to 105 | 15 to 55 | 5 to 30 | 3L, 5L, 10L

Note : For the details of the controller, please refer to the catalog of Yamaha Controllers.

Specification

	X-axis	Y-axis	Z-axis
Motor output	100W	60W	30W
Repeatability ^{Note 1}	+/-0.01mm	+/-0.02mm	+/-0.02mm
Drive system	Ball screw(Class C7)	Ball screw(Class C10)	Ball screw(Class C10)
Ball screw lead (Deceleration ratio)	20mm	12mm	6mm
Maximum speed ^{Note 2}	1200mm/sec	800mm/sec	360mm/sec
Moving range	150 to 1050mm	150 to 550mm	50 to 300mm
Robot cable length	Standard : 3.5m Option : 5m, 10m		
Controller	TRCX-3(Main : DRCX05/Sub : ERCX)		

Maximum load capacity

Y stroke	ZT
150 to 550mm	2kg

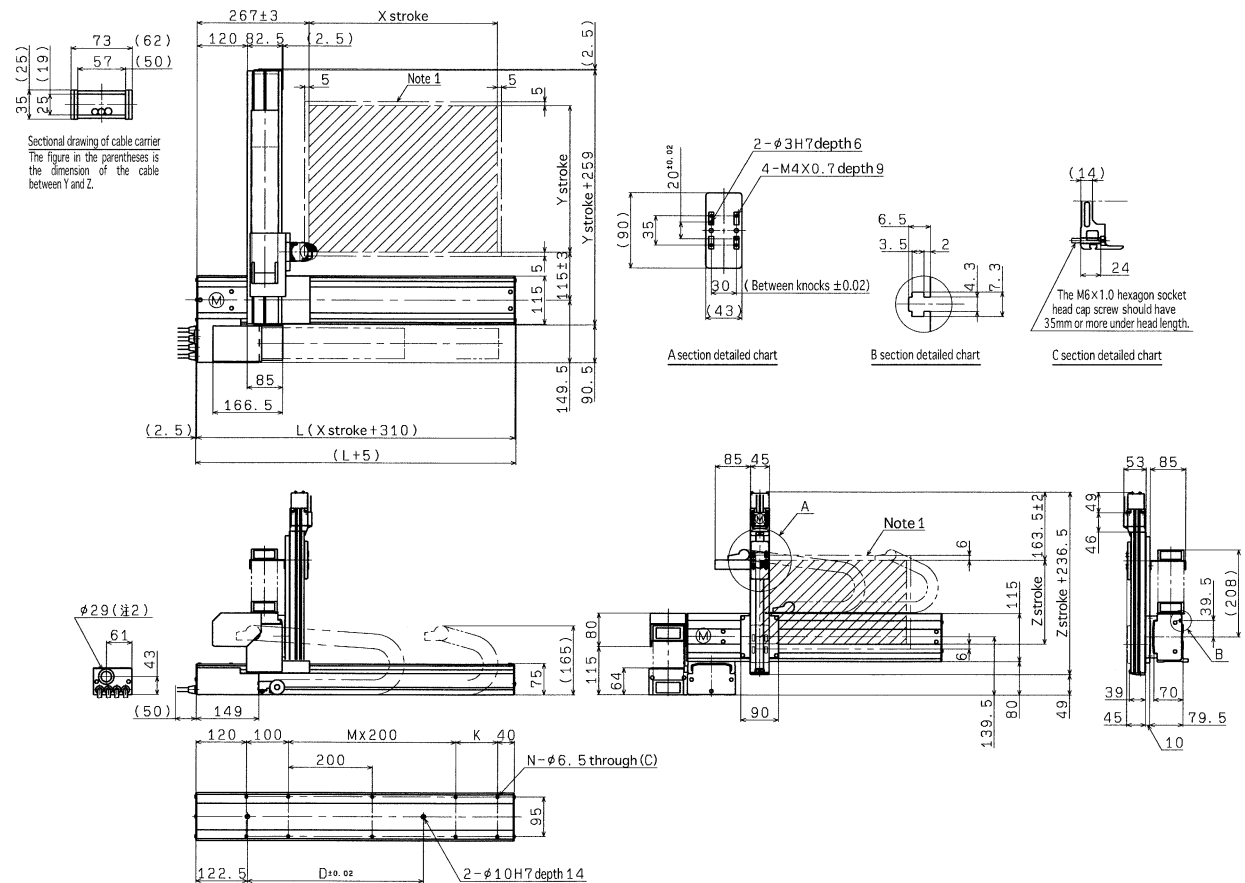
Note 1 : Repeatability for single oscillation.

Note 2 : When the X-axis stroke exceeds 750mm, resonance of a ball screw may occur depending on the operation range (dangerous speed). In such case, make an adjustment to reduce the speed using the corresponding parameter or program and referring to the table below for the maximum speed as a guide.

Axis	X-axis
Stroke (mm)	750 850 950 1050
Maximum speed (mm/sec)	960 780 600 540
Speed setting	80% 65% 50% 45%

Note 3 : For the delivery time, please ask us because this item is made to order.

A1



X stroke	150	250	350	450	550	650	750	850	950	1050
L	460	560	660	760	860	960	1060	1160	1260	1360
K	200	100	200	100	200	100	200	100	200	100
D	240	240	420	420	600	600	780	780	960	1140
M	0	1	1	2	2	3	3	4	4	5
N	6	8	8	10	10	12	12	14	14	16

Note 1 : The moving range when returning to origin and the stop position when stopping by the mechanical stopper.

Note 2 : The port is used when taking out the user cable.

Y stroke	150	250	350	450	550	
Z stroke	50	100	150	200	250	300