

Ordering method

HXYx - C - A1 - 125 - 65 - 3L - RCX222HP - E - R - N - N1

Model - Cable - Combination - X-axis stroke - Y-axis stroke - Cable length - Controller - Usable for CE - Regenerative unit - Input/Output Selection 1 - Input/Output Selection 2

A1 to A4 | 25 to 125 | 25 to 65 | 3L, 5L, 10L

Note : For the details of the controller, please refer to the catalog of Yamaha Controllers.

Specification

	X-axis	Y-axis
Motor output	600W	400W
Repeatability ^{Note 1}	+/-0.01mm	+/-0.01mm
Drive system	Ball screw (Class C7)	Ball screw (Class C7)
Ball screw lead/Deceleration ratio	20mm	20mm
Maximum speed ^{Note 2}	1200mm/sec	1200mm/sec
Moving range	250 to 1250mm	250 to 650mm
Robot cable length	Standard : 3.5m Option : 5m, 10m	
Controller	RCX222HP-RG2,RCX142-R,DRCX2020-R	

Maximum load capacity

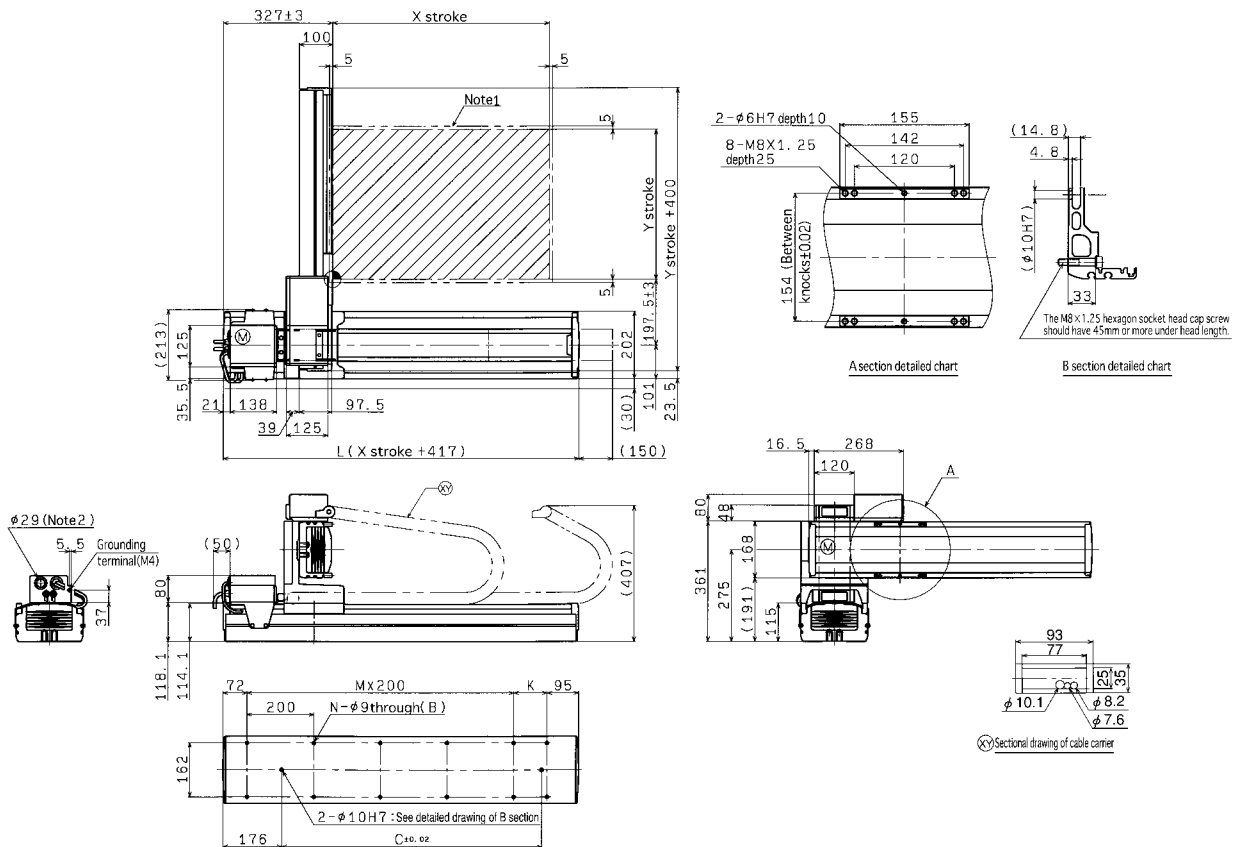
Y stroke	XY 2 axes
250mm	40kg
350mm	40kg
450mm	35kg
550mm	30kg
650mm	30kg

Note 1 : Repeatability for single oscillation.

Note 2 : When the X-axis stroke exceeds 850mm, resonance of a ball screw may occur depending on the operation range (dangerous speed). In such case, make an adjustment to reduce the speed using the corresponding parameter or program and referring to the table below for the maximum speed as a guide.

Axis	X-axis				
Stroke (mm)	850	950	1050	1150	1250
Maximum speed (mm/sec)	960	840	720	600	480
Speed setting	80%	70%	60%	50%	40%

A1



X stroke	250	350	450	550	650	750	850	950	1050	1150	1250
L	667	767	867	967	1067	1167	1267	1367	1467	1567	1667
K	100	200	100	200	100	200	100	200	100	200	100
C	420	420	600	600	780	780	960	960	1140	1320	1320
M	2	2	3	3	4	4	5	5	6	6	7
N	8	8	10	10	12	12	14	14	16	16	18
Y stroke	250	350	450	550	650						

Note 1 : The moving range when returning to origin and the stop position when stopping by the mechanical stopper.

Note 2 : The port is used when taking out the user cable.

