

Ordering method

MXYx- C - A1 - 125 - 65 - IO - 3L - RCX222 - E - R - N - N1

Model - Cable - Combination - X-axis stroke - Y-axis stroke - ZR-axis - Cable length - Controller - Usable for CE - Regenerative unit - Input/Output Selection 1 - Input/Output Selection 2
 A1 to A4 25 to 125 15 to 65 3L, 5L, 10L

Note : For the details of the controller, please refer to the catalog of Yamaha Controllers.

Specification

	X-axis	Y-axis
Motor output	400W	200W
Repeatability ^{Note 1}	+/-0.01mm	+/-0.01mm
Drive system	Ball screw (Class C7)	Ball screw (Class C7)
Ball screw lead/Deceleration ratio	20mm	20mm
Maximum speed ^{Note 2}	1200mm/sec	1200mm/sec
Moving range	250 to 1250mm	150 to 650mm
Robot cable length	Standard : 3.5m Option : 5m, 10m	
Controller	RCX222-RG2,RCX142-R,DRCX2010-R	

Maximum load capacity

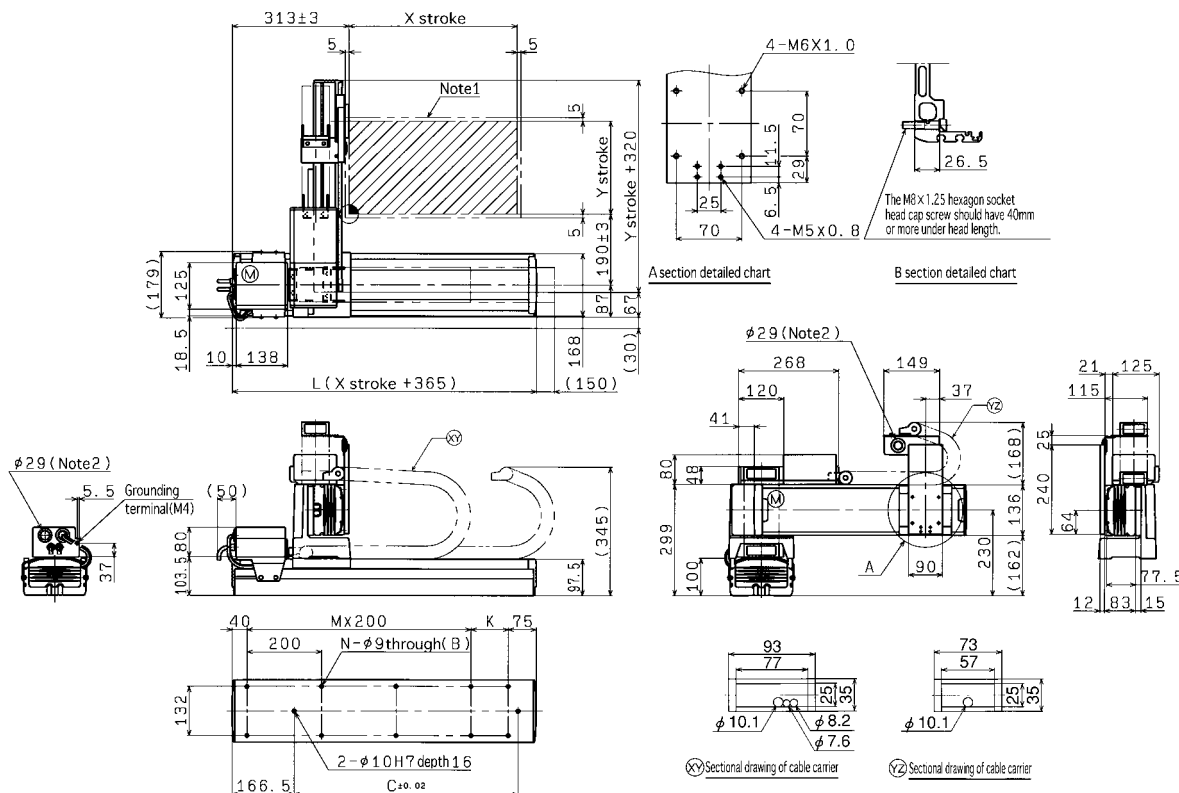
Y stroke	XY 2 axes
150mm	29kg
250mm	29kg
350mm	24kg
450mm	19kg
550mm	19kg
650mm	15kg

Note 1 : Repeatability for single oscillation.

Note 2 : When the X-axis stroke exceeds 850mm, resonance of a ball screw may occur depending on the operation range (dangerous speed). In such case, make an adjustment to reduce the speed using the corresponding parameter or program and referring to the table below for the maximum speed as a guide.

Axis	X-axis				
Stroke (mm)	850	950	1050	1150	1250
Maximum speed (mm/sec)	960	840	720	600	480
Speed setting	80%	70%	60%	50%	40%

A1



X stroke	250	350	450	550	650	750	850	950	1050	1150	1250
L	615	715	815	915	1015	1115	1215	1315	1415	1515	1615
K	100	200	100	200	100	200	100	200	100	200	100
C	240	420	600	600	780	780	960	960	1140	1140	1320
M	2	2	3	3	4	4	5	5	6	6	7
N	8	8	10	10	12	12	14	14	16	16	18
Y stroke	150	250	350	450	550	650					

Note 1 : The moving range when returning to origin and the stop position when stopping by the mechanical stopper.
 Note 2 : The port is used when taking out the user cable.