

Ordering method

SXYBx - C - A1 - 305 - 45 - ZFH - 15 - 3L - RCX142 - E - R - P1 - CC - S

Model - Cable - Combination - X-axis stroke - Y-axis stroke - ZR-axis - Z-axis stroke - Cable length - Controller - Usable for CE - Regenerative unit - Option I/O - Network - Battery

A1 to A4 15 to 305 15 to 45 15 to 35 3L, 5L, 10L

Note : For the details of the controller, please refer to the catalog of Yamaha Controllers.

Specification

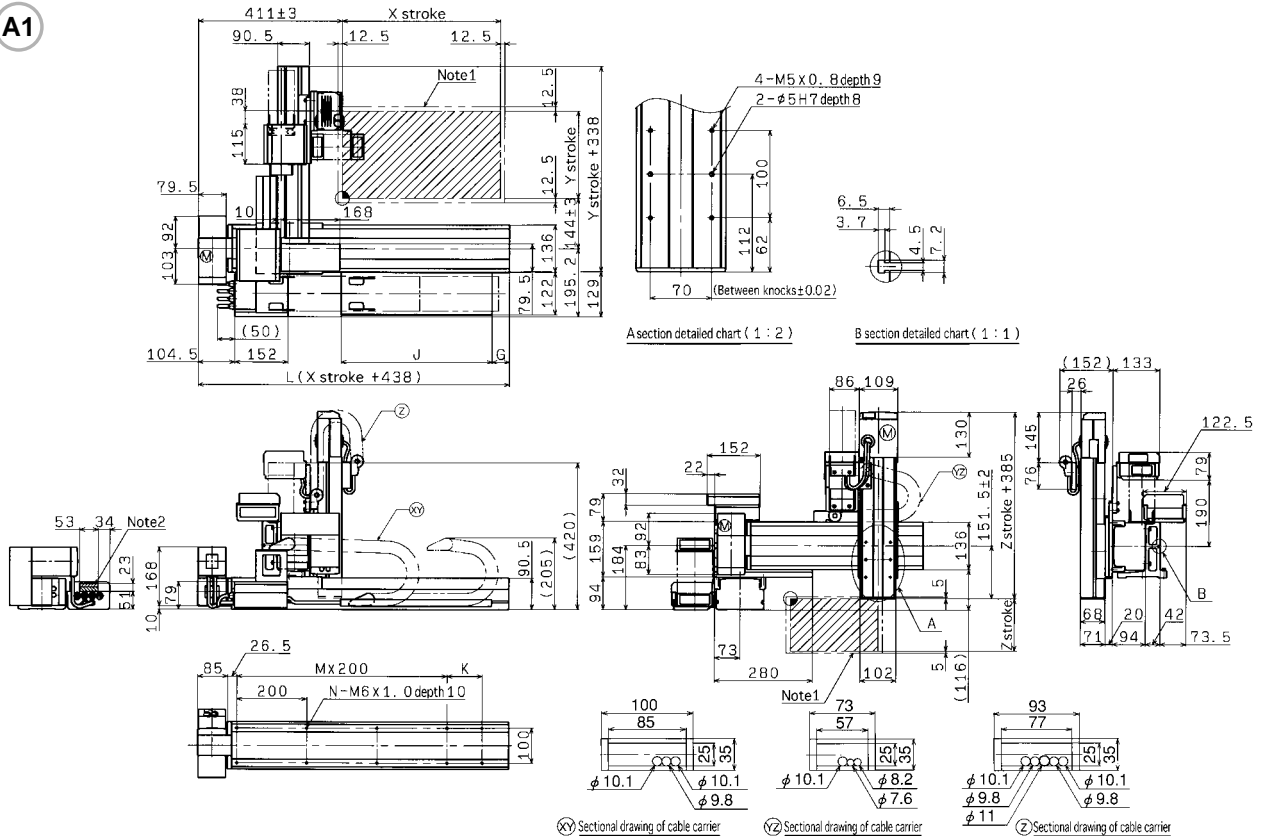
	X-axis	Y-axis	Z-axis
Motor output	200W	100W	200W
Repeatability <sup>Note 1</sup>	+/- 0.04mm	+/- 0.04mm	+/- 0.01mm
Drive system	Timing belt	Timing belt	Ball screw(Class C7)
Ball screw lead/Deceleration ratio	Equivalent to lead 25mm	Equivalent to lead 25mm	10mm
Maximum speed	1875mm/sec	1875mm/sec	600mm/sec
Moving range	150 to 3050mm	150 to 450mm	150 to 350mm
Robot cable length	Standard : 3.5m Option : 5m, 10m		
Controller	RCX142-R		

Note 1 : Repeatability for single oscillation.

Maximum load capacity

	Z stroke		
Y stroke	150mm	250mm	350mm
150mm	7kg	6kg	5kg
250mm	5kg	4kg	3kg
350mm	3kg	2kg	1kg
450mm	1kg	-	-

A1



Note 1 : The moving range when returning to origin and the stop position when stopping by the mechanical stopper. Note 2 : The shaded position indicates the port where the user cable is taken out.

X stroke	150	250	350	450	550	650	750	850	950	1050	1150	1250	1350	1450	1550	1650	1750	1850	1950	2050	2150	2250	2350	2450	2550	2650	2750	2850	2950	3050							
L	588	688	788	888	988	1088	1188	1288	1388	1488	1588	1688	1788	1888	1988	2088	2188	2288	2388	2488	2588	2688	2788	2888	2988	3088	3188	3288	3388	3488							
K	200	100	200	100	200	100	200	100	200	100	200	100	200	100	200	100	200	100	200	100	200	100	200	100	200	100	200	100	200	100							
M	1	2	2	3	3	4	4	5	5	6	6	7	7	8	8	9	9	10	10	11	11	12	12	13	13	14	14	15	15	16							
N	6	8	8	10	10	12	12	14	14	16	16	18	18	20	20	22	22	24	24	26	26	28	28	30	30	32	32	34	34	36							
G	0	50	0	50	0	50	0	50	0	50	0	50	0	50	0	50	0	50	0	50	0	50	0	50	0	50	0	50	0	50							
J	330	330	430	430	530	530	630	630	730	730	830	830	930	930	1030	1030	1130	1130	1230	1230	1330	1330	1430	1430	1530	1530	1630	1630	1730	1730							
Y stroke	150	250	350	450																																	
Z stroke	150	250	350																																		