

Ordering method

SXYx - C - A1 - 105 - 55 - ZRFH - 15 - 3L - RCX142 - E - R - P1 - CC - S

Model - Cable - Combination - X-axis stroke - Y-axis stroke - ZR-axis - Z-axis stroke - Cable length - Controller - Usable for CE - Regenerative unit - Option I/O - Network - Battery

A1 to A4 | 15 to 105 | 15 to 55 | 15 to 35 | 3L, 5L, 10L

Note : For the details of the controller, please refer to the catalog of Yamaha Controllers.

Specification

	X-axis	Y-axis	Z-axis	R-axis
Motor output	200W	100W	200W	50W
Repeatability ^{Note 1}	+/-0.01mm	+/-0.01mm	+/-0.01mm	+/-0.0083°
Drive system	Ball screw(Class C7)	Ball screw(Class C7)	Ball screw(Class C7)	Harmonic gear
Ball screw lead(Deceleration ratio)	20mm	20mm	10mm	(1/50)
Maximum speed ^{Note 2}	1200mm/sec	1200mm/sec	600mm/sec	360°/sec
Moving range	150 to 1050mm	150 to 550mm	150 to 350mm	360°
Robot cable length	Standard : 3.5m Option : 5m, 10m			
Controller	RCX142-R			

Maximum load capacity

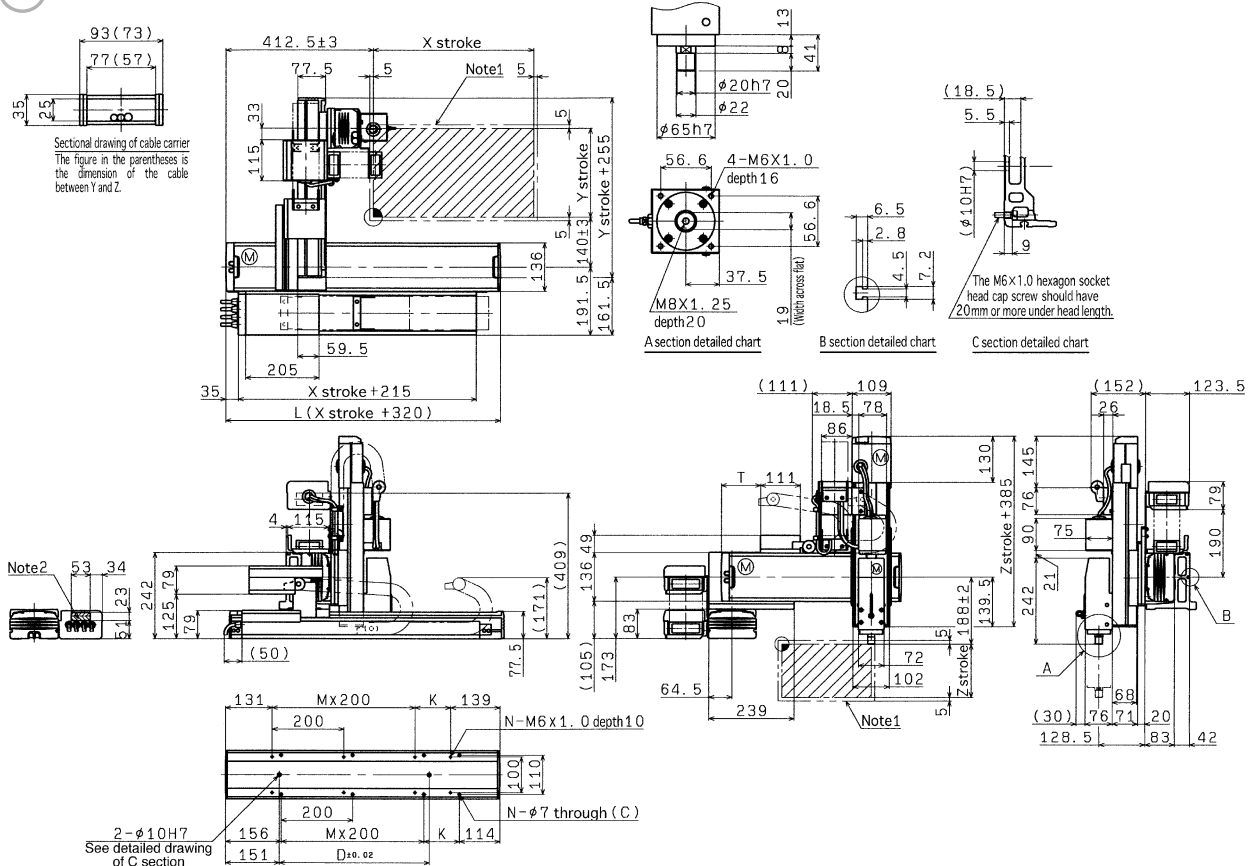
Y stroke	Z stroke		
	150mm	250mm	350mm
150mm	9kg	8kg	7kg
250mm	4kg	5kg	4kg
350mm	4kg	3kg	1kg
450mm	2kg	1kg	—
550mm	1kg	—	—

Note 1 : Repeatability for single oscillation.

Note 2 : When the X-axis stroke exceeds 750mm, resonance of a ball screw may occur depending on the operation range (dangerous speed). In such case, make an adjustment to reduce the speed using the corresponding parameter or program and referring to the table below for the maximum speed as a guide.

Axis	X-axis			
Stroke (mm)	750	850	950	1050
Maximum speed (mm/sec)	960	780	600	540
Speed setting	80%	65%	50%	45%

A1



X stroke	150	250	350	450	550	650	750	850	950	1050
L	470	570	670	770	870	970	1070	1170	1270	1370
K	200	100	200	100	200	100	200	100	200	100
D	240	240	420	420	600	600	780	960	960	1140
M	0	1	1	2	2	3	3	4	4	5
N	4	6	6	8	8	10	10	12	12	14

Y stroke	150	250	350	450	550
T	55	110	165	220	275

Z stroke	150	250	350

Note 1 : The moving range when returning to origin and the stop position when stopping by the mechanical stopper.

Note 2 : The shaded position indicates the port where the user cable is taken out.