

Ordering method

SXYx - C - F1 - 105 - ZF - 35 - 3L - DRCX - 0505 - E - CC - B1

Model - Cable - Combination - X-axis stroke - ZR-axis - Y-axis stroke - Cable length - Controller - Driver model - Usable for CE - Network - Battery
 F1,F3 | 15 to 105 | 15 to 35 | 3L,5L,10L

Note : For the details of the controller, please refer to the Yamaha Controller page.

Specification

	X-axis	Z-axis
Motor output	100W	100W
Repeatability ^{Note 1}	+/-0.01mm	+/-0.01mm
Drive system	Ball screw(Class C7)	Ball screw(Class C7)
Ball screw lead(Deceleration ratio)	20mm	10mm
Maximum speed ^{Note 2}	1200mm/sec	600mm/sec
Moving range	150 to 1050mm	150 to 350mm
Robot cable length	Standard : 3.5m Option : 5m, 10m	
Controller	DRCX0505,RCX142	

Maximum load capacity

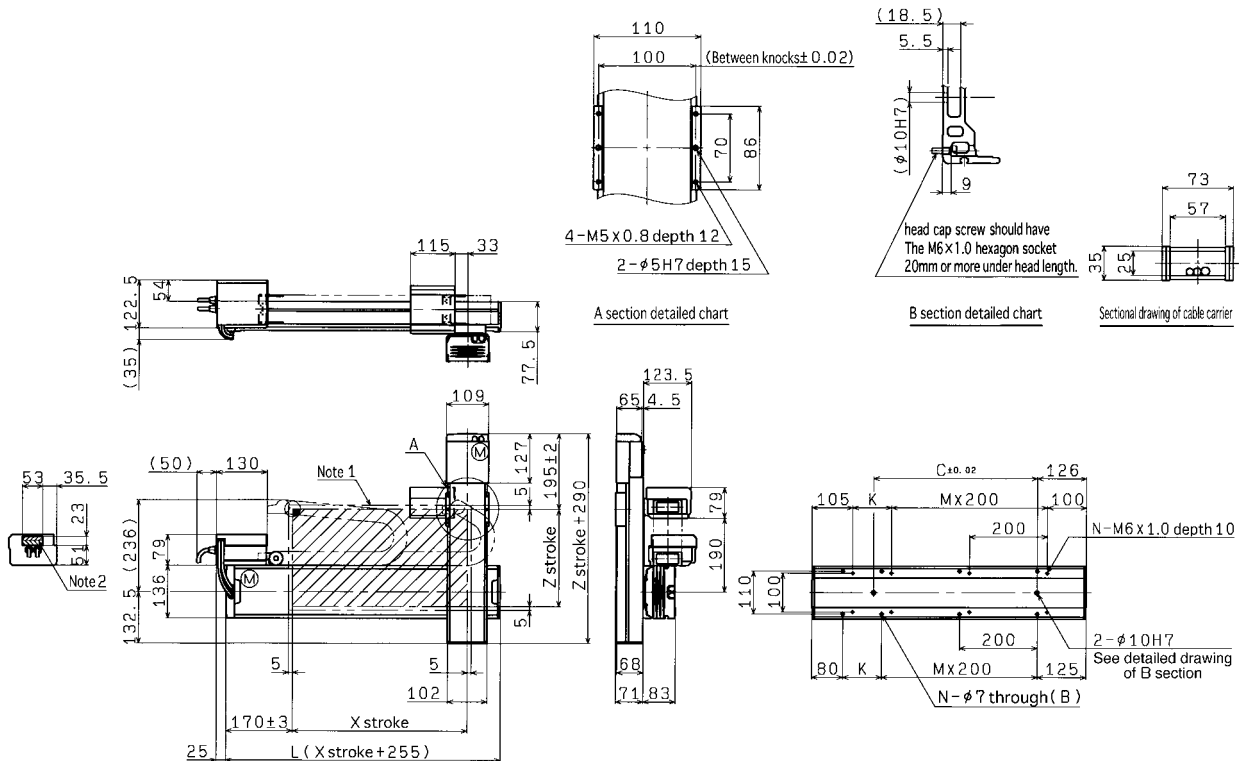
	Z stroke
Y stroke	150mm to 350mm
150 to 1050mm	10kg

Note 1 : Repeatability for single oscillation.

Note 2 : When the X-axis stroke exceeds 750mm, resonance of a ball screw may occur depending on the operation range (dangerous speed). In such case, make an adjustment to reduce the speed using the corresponding parameter or program and referring to the table below for the maximum speed as a guide.

Axis	X-axis			
Stroke (mm)	750	850	950	1050
Maximum speed (mm/sec)	960	780	600	540
Speed setting	80%	65%	50%	45%

F1



X stroke	150	250	350	450	550	650	750	850	950	1050
L	405	505	605	705	805	905	1005	1105	1205	1305
K	200	100	200	100	200	100	200	100	200	100
C	240	240	420	420	600	600	780	780	960	960
M	0	1	1	2	2	3	3	4	4	5
N	4	6	6	8	8	10	10	12	12	14
Z stroke	150	250	350							

Note 1 : The moving range when returning to origin and the stop position when stopping by the mechanical stopper.

Note 2 : The shaded position indicates the port where the user cable is taken out.