

Ordering method

SXYx - C - F1 - 105 - ZS12 - 15 - 3L - DRCX - 0505 - E - CC - B1

Model - Cable - Combination - X-axis stroke - ZR-axis - Y-axis stroke - Cable length - Controller - Driver model - Usable for CE - Network - Battery

F1, F3 - 15 to 105 - ZS12, ZS6 - 3L, 5L, 10L

Note : For the details of the controller, please refer to the Yamaha Controller page.

Specification

	X-axis	Z-axis : ZS12	Z-axis : ZS6
Motor output	100W	60W	
Repeatability ^{Note 1}	+/-0.01mm	+/-0.01mm	
Drive system	Ball screw(Class C7)	Ball screw(Class C10)	
Ball screw lead (Deceleration ratio)	20mm	12mm	6mm
Maximum speed ^{Note 2}	During RCX40 use	1200mm/sec	1000mm/sec
	During DRCX use	1200mm/sec	900mm/sec
Moving range	150 to 1050mm	150mm	
Robot cable length	Standard : 3.5m Option : 5m, 10m		
Controller	DRCX0505, RCX142		

Maximum load capacity

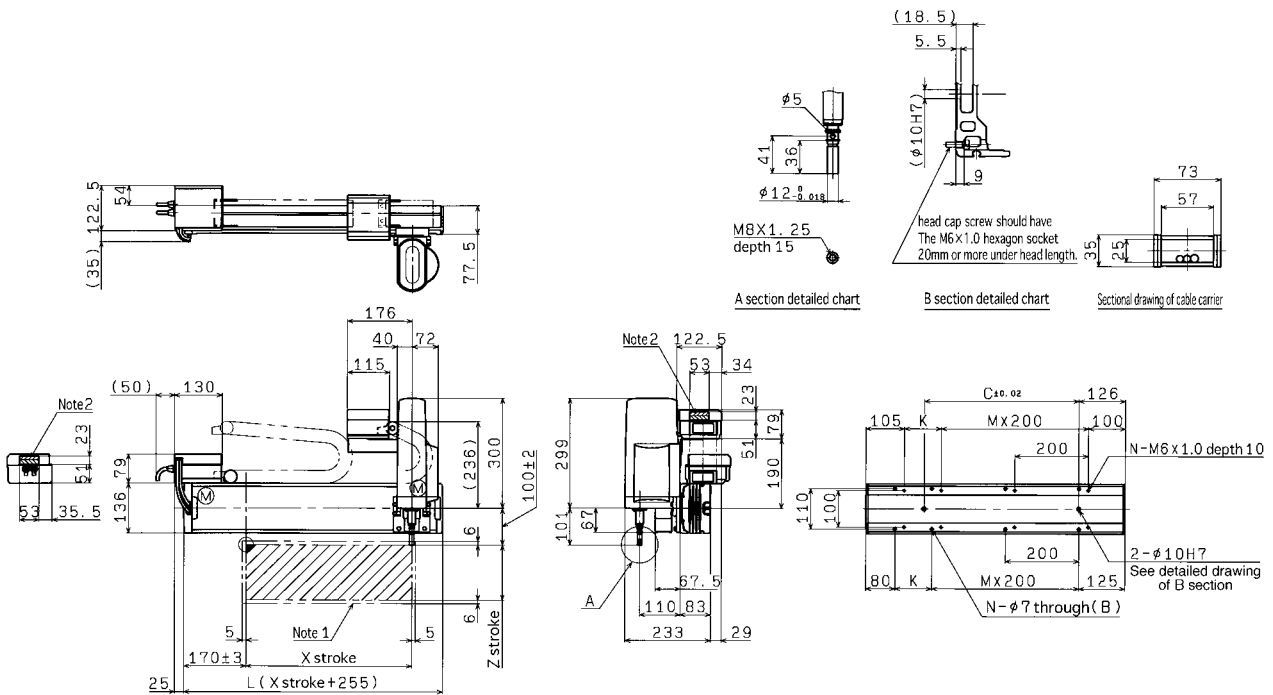
X stroke	ZS12	ZS6
150 to 1050mm	3kg	5kg

Note 1 : Repeatability for single oscillation.

Note 2 : When the X-axis stroke exceeds 750mm, resonance of a ball screw may occur depending on the operation range (dangerous speed). In such case, make an adjustment to reduce the speed using the corresponding parameter or program and referring to the table below for the maximum speed as a guide.

Axis	X-axis			
Stroke (mm)	750	850	950	1050
Maximum speed (mm/sec)	960	780	600	540
Speed setting	80%	65%	50%	45%

F1



X stroke	150	250	350	450	550	650	750	850	950	1050
L	405	505	605	705	805	905	1005	1105	1205	1305
K	200	100	200	100	200	100	200	100	200	100
C	240	240	420	420	600	600	780	780	960	960
M	0	1	1	2	2	3	3	4	4	5
N	4	6	6	8	8	10	10	12	12	14
Z stroke	150									

Note 1 : The moving range when returning to origin and the stop position when stopping by the mechanical stopper.

Note 2 : The shaded position indicates the port where the user cable is taken out.