

**Moving arm type**

**Whipover**

# SXYx

**3axes/ZFH**

**Ordering method**

**SXYx - S - M1 - 85 - 35 - ZFH - 35 - 3L - RCX142 - E - R - P1 - CC - S**

Model - Cable - Combination - X-axis stroke - Y-axis stroke - ZR-axis - Z-axis stroke - Cable length - Controller - Usable for CE - Regenerative unit - Option I/O - Network - Battery

M1, M3 | 15 to 85 | 15 to 35 | 15 to 35 | 3L, 5L, 10L

Note : For the details of the controller, please refer to the catalog of Yamaha Controllers.

**Specification**

	X-axis	Y-axis	Z-axis
Motor output	200W	100W	200W
Repeatability <sup>Note 1</sup>	+/-0.01mm	+/-0.01mm	+/-0.01mm
Drive system	Ball screw(Class C7)	Ball screw(Class C7)	Ball screw(Class C7)
Ball screw lead (Deceleration ratio)	20mm	20mm	10mm
Maximum speed <sup>Note 2</sup>	1200mm/sec	1200mm/sec	600mm/sec
Moving range	150 to 850mm	150 to 350mm	150 to 350mm
Robot cable length	Standard : 3.5m Option : 5m, 10m		
Controller	RCX142-R		

**Maximum load capacity**

	Z stroke		
Y stroke	150mm	250mm	350mm
150mm	9kg	8kg	7kg
250mm	8kg	7kg	6kg
350mm	7kg	6kg	5kg

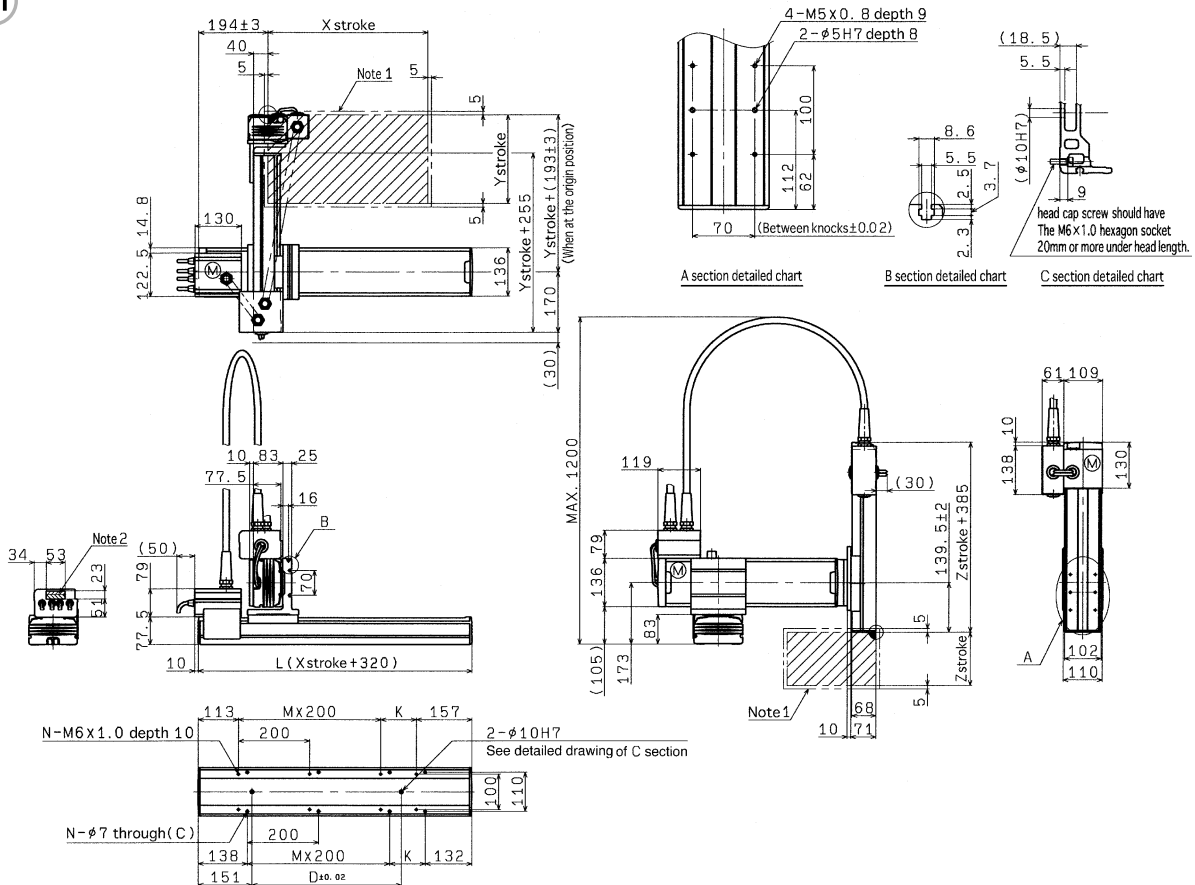
Note 1 : Repeatability for single oscillation.

Note 2 : The total of the X and Y strokes should be 1000mm or less.

Note 3 : When the X-axis stroke exceeds 750mm, resonance of a ball screw may occur depending on the operation range (dangerous speed). In such case, make an adjustment to reduce the speed using the corresponding parameter or program and referring to the table below for the maximum speed as a guide.

Axis	X-axis
Stroke (mm)	750   850
Maximum speed (mm/sec)	960   780
Speed setting	80%   65%

**M1**



<b>X stroke</b>	150	250	350	450	550	650	750	850
L	470	570	670	770	870	970	1070	1170
K	200	100	200	100	200	100	200	100
D	240	240	420	420	600	600	780	960
M	0	1	1	2	2	3	3	4
N	4	6	6	8	8	10	10	12

<b>Y stroke</b>	150	250	350
<b>Z stroke</b>	150	250	350

Note : The total of the X and Y strokes should be 1000mm or less.

Note 1 : The moving range when returning to origin and the stop position when stopping by the mechanical stopper.

Note 2 : The shaded position indicates the port where the user cable is taken out.