

# MR25F

## Ordering method

### Single carriage model

Model	Cable carrier take out direction	Optional cable carrier for users	Stroke	Cable length	Controller	Driver	Usable for CE	Network	I/O connector specification
MR25F - RH - S - 2000 - 3L - SRCP - 10A - E - CC - CN1	-RH: Horizontal, right -LH: Horizontal, left -RW: Wall hanging, right -LW: Wall hanging, left	-No entry: None -S: Small size -M: Large size	100 to 2000 (100mm pitch)	-3L: 3.5m (Standard) -5L: 5m -10L: 10m	-SRCP -RDP (see page 22)		-No entry: Standard -E: CE specification	-No entry: None -CC: CC-Link -DN: DeviceNet -PB: Profibus -EN: Ethernet	-CN1: I/O flat cable 1m (Standard) -CN2: Twisted-pair cable 2m

### Double carriage model

Model	Installation method	Optional cable carrier for users	Stroke	Cable length	Controller	Driver	Usable for CE	Network	I/O connector specification
MR25FD - H - S - 1700 - 3L - SRCP - 10A - E - CC - CN1	-H: Horizontal installation -W: Wall hanging installation	-No entry: None -S: Small size -M: Large size	100 to 1700 (100mm pitch)	-3L: 3.5m (Standard) -5L: 5m -10L: 10m	-SRCP -RCX141 -RDP (see page 22)		-No entry: Standard -E: CE specification	-No entry: None -CC: CC-Link -DN: DeviceNet -PB: Profibus -EN: Ethernet	-CN1: I/O flat cable 1m (Standard) -CN2: Twisted-pair cable 2m

Note : 2 units are required when using SRCP or RDP based on the double carrier specifications.

## Basic specification

Model	MR25F
Repeated positioning accuracy	+/-5 $\mu$ m or less
Maximum dimensions of cross section of main unit	W145 x H120mm (except the cable carrier section)
Shaft bearing method	2 guide rail, 4 blocks (with retainer)
Driving method	Shaft motor
Shaft diameter	$\phi$ 25
Scale	Magnetic type: resolution of 1 $\mu$ m
Rated thrusting force	64N
Maximum carrying weight	20kg
Maximum speed	2500mm/sec (Note 1)
Maximum stroke	2000mm
Operating temperature	10°C to 40°C
Controller	SRCP-10A
Robot driver	RDP-10-RBR1

Note 1 : Depending on the operation conditions, it may not be possible to use the unit at the maximum speed.

## Static load moment

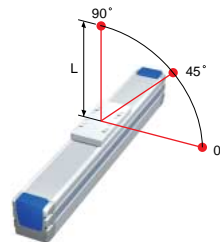
Allowable static load moment (N · m)	MY : 335	MP : 390	MR : 274
	MY : Yawing direction	MP : Pitching direction	MR : Rolling direction

## Allowable overhang (Note 2)

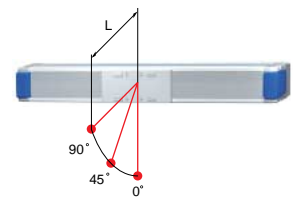
Load	Angle	0°	45°	90°
		Horizontal model (mm)		
5kg		—	—	—
10kg		550	594	1100
15kg		500	566	1000
20kg		410	467	820
5kg		—	—	—
10kg		1200	438	393
15kg		1000	382	328
20kg		700	283	228

Note 2 : Distance from the center of the top face of the carriage to the gravity center of the item being carried.

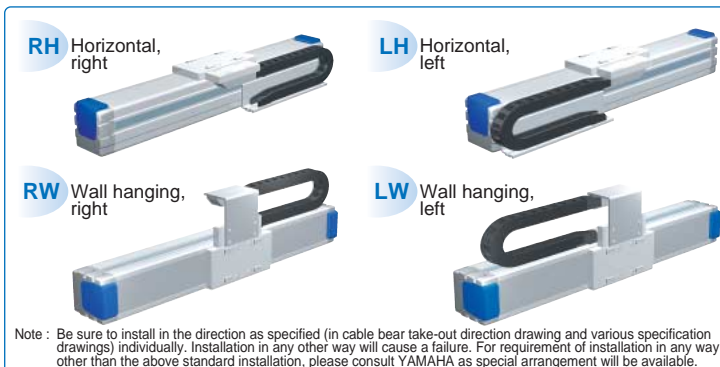
### Horizontal model



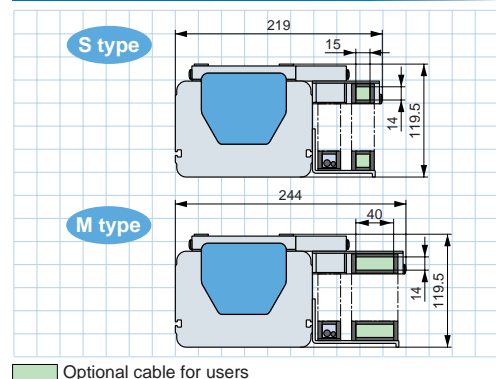
### Wall hanging model



## Cable carrier take out direction



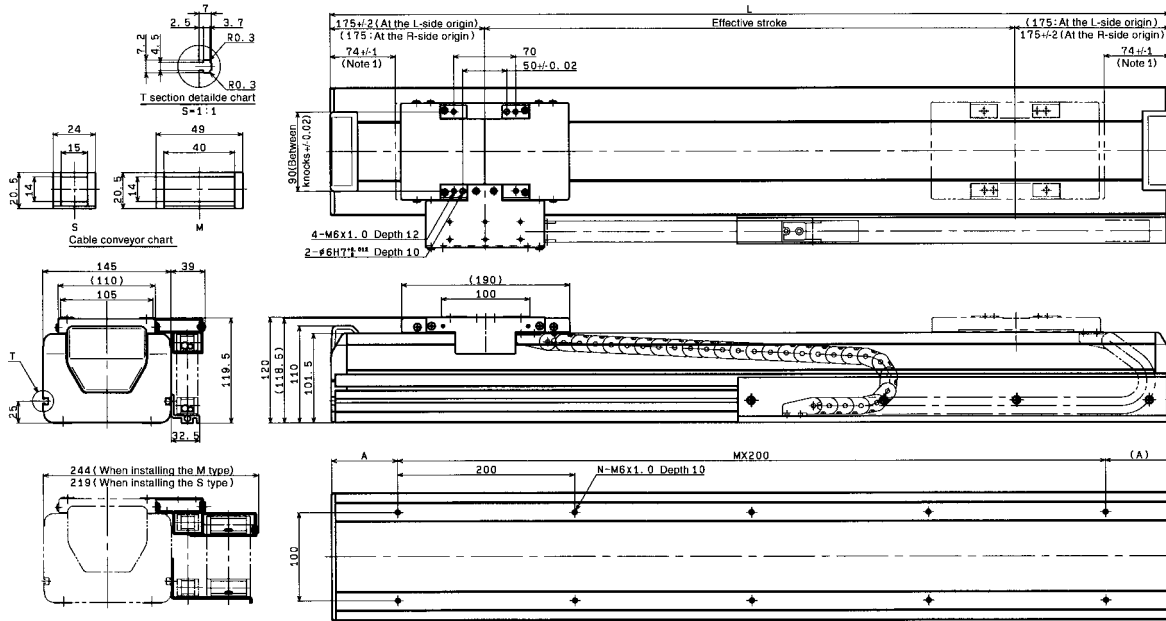
## Optional cable carrier for users



# MR20FH/MR25F

## MR20FH / MR25F single carriage horizontal model RH

Note : The external dimensions of MR20FH and MR25F are the same.

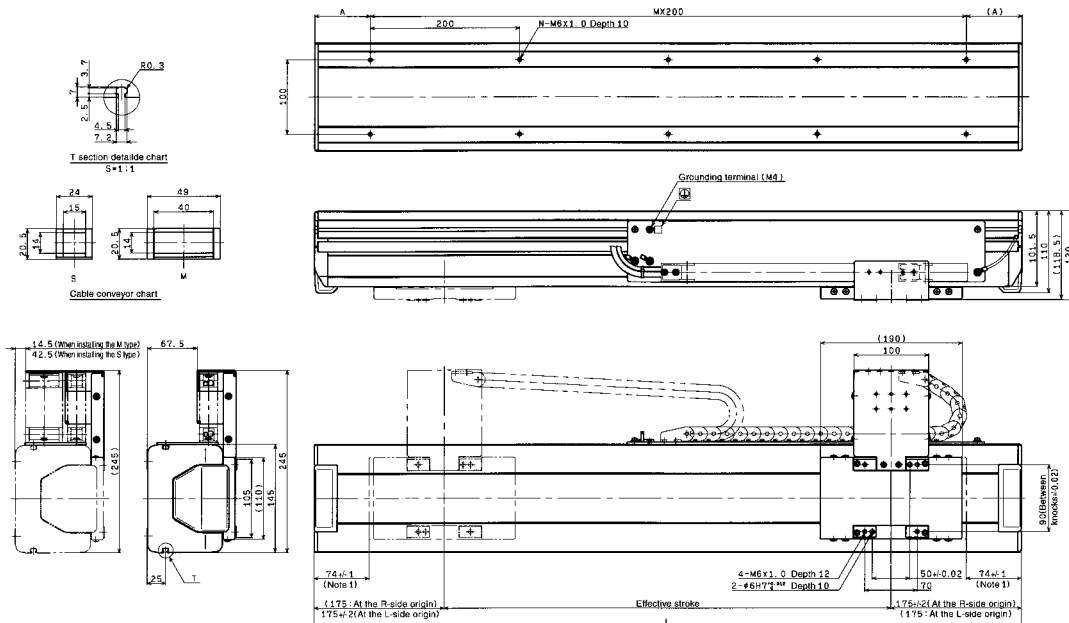


Note1: Distance from both ends to the mechanical stopper. Note : The origin is set on the left side at the time of shipment. It can be reset on the right side by means of the parameter setting.

Effective stroke	100	200	300	400	500	600	700	800	900	1000	1100	1200	1300	1400	1500	1600	1700	1800	1900	2000
L	450	550	650	750	850	950	1050	1150	1250	1350	1450	1550	1650	1750	1850	1950	2050	2150	2250	2350
A	25	75	25	75	25	75	25	75	25	75	25	75	25	75	25	75	25	75	25	75
M	2	2	3	3	4	4	5	5	6	6	7	7	8	8	9	9	10	10	11	11
N	6	6	8	8	10	10	12	12	14	14	16	16	18	18	20	20	22	22	24	24
Weight (kg)	MR20FH 11.5	MR20FH 13.0	MR20FH 14.5	MR20FH 16.0	MR20FH 17.5	MR20FH 19.0	MR20FH 20.5	MR20FH 22.0	MR20FH 23.5	MR20FH 25.0	MR20FH 26.5	MR20FH 28.0	MR20FH 29.5	MR20FH 31.0	MR20FH 32.5	MR20FH 34.0	MR20FH 35.5	MR20FH 37.0	MR20FH 38.5	MR20FH 40.0
	MR25F 11.6	MR25F 13.5	MR25F 15.3	MR25F 17.2	MR25F 19.0	MR25F 20.9	MR25F 22.7	MR25F 24.6	MR25F 26.4	MR25F 28.3	MR25F 30.1	MR25F 32.0	MR25F 33.8	MR25F 35.7	MR25F 37.5	MR25F 39.4	MR25F 41.2	MR25F 43.1	MR25F 44.9	MR25F 46.8

## MR20FH / MR25F single carriage wall hanging model RW

Note : The external dimensions of MR20FH and MR25F are the same.



Note1: Distance from both ends to the mechanical stopper. Note : The origin is set on the right side at the time of shipment. It can be reset on the left side by means of the parameter setting.

Effective stroke	100	200	300	400	500	600	700	800	900	1000	1100	1200	1300	1400	1500	1600	1700	1800	1900	2000
L	450	550	650	750	850	950	1050	1150	1250	1350	1450	1550	1650	1750	1850	1950	2050	2150	2250	2350
A	25	75	25	75	25	75	25	75	25	75	25	75	25	75	25	75	25	75	25	75
M	2	2	3	3	4	4	5	5	6	6	7	7	8	8	9	9	10	10	11	11
N	6	6	8	8	10	10	12	12	14	14	16	16	18	18	20	20	22	22	24	24
Weight (kg)	MR20FH 11.5	MR20FH 13.0	MR20FH 14.5	MR20FH 16.0	MR20FH 17.5	MR20FH 19.0	MR20FH 20.5	MR20FH 22.0	MR20FH 23.5	MR20FH 25.0	MR20FH 26.5	MR20FH 28.0	MR20FH 29.5	MR20FH 31.0	MR20FH 32.5	MR20FH 34.0	MR20FH 35.5	MR20FH 37.0	MR20FH 38.5	MR20FH 40.0
	MR25F 11.6	MR25F 13.5	MR25F 15.3	MR25F 17.2	MR25F 19.0	MR25F 20.9	MR25F 22.7	MR25F 24.6	MR25F 26.4	MR25F 28.3	MR25F 30.1	MR25F 32.0	MR25F 33.8	MR25F 35.7	MR25F 37.5	MR25F 39.4	MR25F 41.2	MR25F 43.1	MR25F 44.9	MR25F 46.8

