

# C5

Standard Origin at opposite of motor

## Robot ordering method

C5 - 12 - BK - 600 - 3L - ERCX - E - B

Model	Lead designation	Brake	Stroke	Cable length	Applicable controller	Usable for CE	Network option	Battery
	12: 12mm 6: 6mm	No entry: No brakes BK: Brakes provided	50 to 600 (50mm pitch)	3L: 3.5m (Standard) 5L: 5m 10L: 10m	ERCX ERCD	No entry: Standard E: CE specification	No entry: None CC: CC-Link DN: DeviceNet PB: Profibus EN: Ethernet	B1: 700mAh B2: 2000mAh

Note: It will be a customer's choice.

### Basic specifications

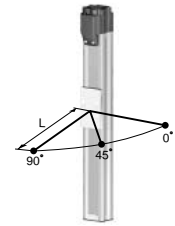
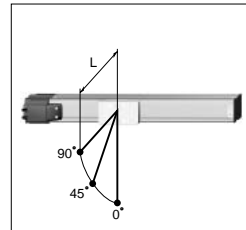
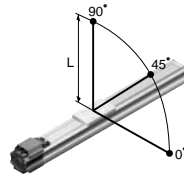
AC servo motor output (W)	30	
Repeatability (mm) <sup>Note 1</sup>	±0.02	
Deceleration mechanism	Ball screw (Class C10)	
Ball screw lead (mm)	12	6
Maximum speed (mm/sec)	800	400
Maximum payload (kg)	Horizontal	5
	Vertical	9
Rated thrust (N)	1.2	2.4
	32	64
Stroke (mm)	50 to 600 (50 pitch)	
Cable length (m)	3.5 (Standard), 5, 10	
Controller	Horizontal	ERCX, ERCD
	Vertical	ERCX, ERCD
Degree of cleanliness	CLASS 10 <sup>Note 2</sup>	
Intake air (ℓ/min)	20 to 30 <sup>Note 3</sup>	

Note 1: Repeatability for single oscillation.

Note 2: Per 1cf (0.1µm base), when the suction blower is used.

Note 3: The necessary intake amount varies depending on the use conditions and environment.

### Tolerable overhang amount <sup>Note</sup>



During horizontal use (Unit: mm)

	0°	45°	90°
Lead 12	2kg: 225	245	450
	5kg: 90	105	170
Lead 6	3kg: 280	325	950
	9kg: 100	125	330

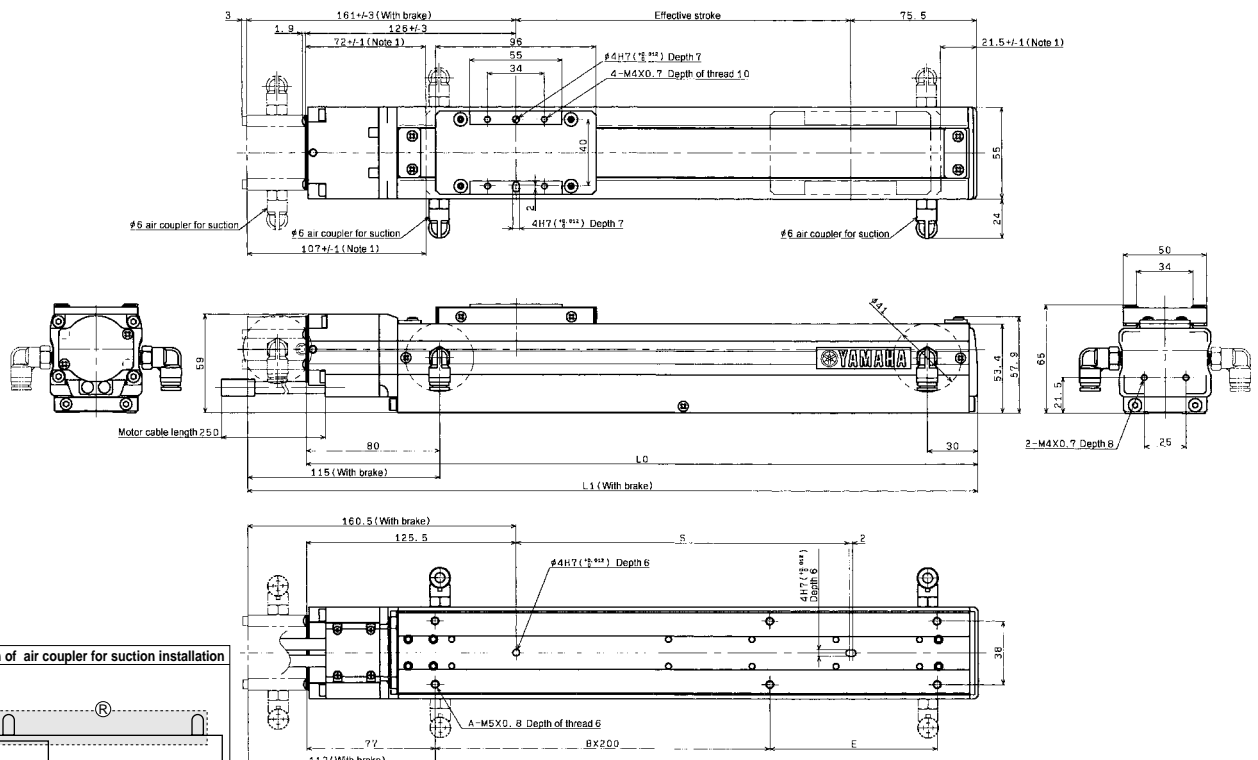
During wall installation use (Unit: mm)

	0°	45°	90°
Lead 12	2kg: 360	245	225
	5kg: 135	105	90
Lead 6	3kg: 760	325	280
	9kg: 260	100	70

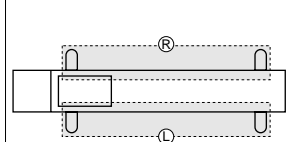
During vertical use (Unit: mm)

	0°	45°	90°
Lead 12	1.2kg: 220	165	250
Lead 6	2.4kg: 150	100	170

Note: Distance from center of slider top to center of gravity of object being transported.



#### Direction of air coupler for suction installation



Effective stroke	50	100	150	200	250	300	350	400	450	500	550	600
A	4	4	4	6	6	6	6	8	8	8	8	10
B	0	0	0	1	1	1	1	2	2	2	2	3
E	100	200	200	100	100	200	200	100	100	200	200	100
L0	251.5	301.5	351.5	401.5	451.5	501.5	551.5	601.5	651.5	701.5	751.5	801.5
L1	286.5	336.5	386.5	436.5	486.5	536.5	586.5	636.5	686.5	736.5	786.5	836.5
S	50	100	150	200	250	300	350	400	450	500	550	600
Weight (kg) <sup>Note 4</sup>	2.3	2.4	2.6	2.8	2.9	3.1	3.3	3.4	3.6	3.8	3.9	4.1

Note 1: Length from both ends to mechanical stopper position.

Note 2: Either right or left can be selected for the installation direction for the 6 intake air joint.

Note 3: The minimum bend radius of the motor cable is R50.

Note 4: This is the weight of the model without a brake. The weight of the model equipped with a brake is 0.1kg heavier than this value.